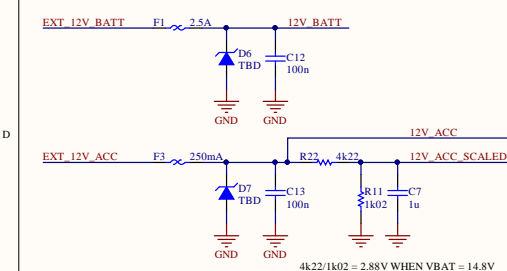
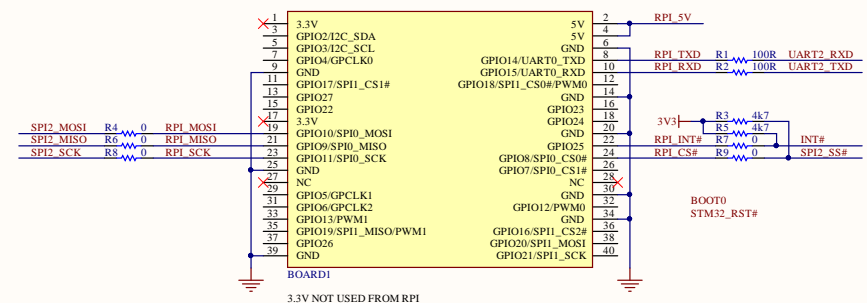


2.5A, 24V PTC IS 2920 PKG
250mA, 24V PTC IS 1210 PKG
RELAY IS J1031C12VDC.15S



IDEA IS TO PROVIDE 3X CAN, 1X LIN TO RPI
COULD ALSO BE USED STANDALONE VIA UART/SPI
SMART SEQUENCE OF POWER UP/DOWN, PROTECT CAR BATTERY
ALLOW RPI TO SAFELY SHUT DOWN BEFORE REMOVING 5V
ALSO ALLOW RPI TO UPDATE STM32 VIA UART AND BOOT0/RST/RPI_FOC

SOME GENERIC RELAYS AND 12V SAFE INPUTS
MAYBE SOME ANALOG INPUTS/OUTPUTS?



Title		
Size	Number	Revision
Date:	4/17/2023	Sheet of
File:	Z:\Projects\...rpi20autocan.SchDoc	Drawn By: